

MALU WILZ

SMALL PRODUCTS INGREDIENT LIST NOTICE

Cfr CEE 1223/2009 art.19.2 & 3

427.xx Hydra Lip Gloss



INGREDIENTS: POLYBUTENE, TRIDECYL TRIMELLITATE, PENTAERYTHRITYL TETRAISOSTEARATE, SILICA DIMETHYL SILYLATE, OCTYLDODECANOL, HELIANTHUS ANNUUS (SUNFLOWER) SEED OIL, CALCIUM ALUMINUM BOROSILICATE, C30-45 ALKYLDIMETHYLSILYL POLYPROPYLSILSESQUIOXANE, ETHYLHEXYL PALMITATE, CAPRYLIC/CAPRIC TRIGLYCERIDE, BENZYL BENZOATE, POLYGLYCERYL-4 ISOSTEARATE, PHENOXYETHANOL, SILICA, CAPRYLYL GLYCOL, AROMA (FLAVOR), LUPINUS ALBUS SEED EXTRACT, CRAMBE MARITIMA LEAF EXTRACT, BUTYLENE GLYCOL, TIN OXIDE, KAOLIN, SODIUM CHONDROITIN SULFATE, ATELOCOLLAGEN, HEXYLENE GLYCOL, SODIUM HYALURONATE, TOCOPHEROL, [+/- (MAY CONTAIN) CI 15850 (RED 7), CI 77491 (IRON OXIDES), CI 77492 (IRON OXIDES), CI 77499 (IRON OXIDES), CI 77742 (MANGANESE VIOLET), CI 77891 (TITANIUM DIOXIDE)].

MALU WILZ Beauté GmbH
Gaußstrasse 13, 85757 Karlsfeld
Germany

MALU WILZ

SMALL PRODUCTS INGREDIENT LIST NOTICE

Cfr CEE 1223/2009 art.19.2 & 3

47595 Ray of Light Glow Fluid



INGREDIENTS: AQUA (WATER), MICA, BUTYLENE GLYCOL, GLYCERIN, CAPRYLIC/CAPRIC GLYCERIDES, DIMETHICONE, ACRYLAMIDE/SODIUM ACRYLOYLDIMETHYLTAURATE COPOLYMER, PHENOXYETHANOL, ISOHEXADECANE, DIMETHICONE/VINYL DIMETHICONE CROSSPOLYMER, ETHYLHEXYLGLYCERIN, POLYSORBATE 80, SORBITAN OLEATE, TOCOPHEROL, CI 77491 (IRON OXIDES), CI 77891 (TITANIUM DIOXIDE)

MALU WILZ Beauté GmbH
Gaußstrasse 13, 85757 Karlsfeld
Germany

MALU WILZ

SMALL PRODUCTS INGREDIENT LIST NOTICE

Cfr CEE 1223/2009 art.19.2 & 3

47598 Bronzing Glow Skin Oil



INGREDIENTS: CAPRYLIC/CAPRIC TRIGLYCERIDE, COCO-CAPRYLATE/CAPRATE, DICAPRYLYL ETHER, POLYGLYCERYL-2 TRIISOSTEARATE, SILICA, MICA, PARFUM (FRAGRANCE), PASSIFLORA EDULIS SEED OIL, SIMMONDSIA CHINENSIS (JOJOBA) SEED OIL, SQUALANE, LECITHIN, TOCOPHEROL, ASCORBYL PALMITATE, CITRIC ACID, CI 77491 (IRON OXIDES), CI 77891 (TITANIUM DIOXIDE)

MALU WILZ Beauté GmbH
Gaußstrasse 13, 85757 Karlsfeld
Germany

MALU WILZ

SMALL PRODUCTS INGREDIENT LIST NOTICE

Cfr CEE 1223/2009 art.19.2 & 3

445.xx Contouring Powder



INGREDIENTS: TALC, OCTYLDODECYL STEAROYL STEARATE, ALUMINUM STARCH OCTENYLSUCCINATE, LAUROYL LYSINE, NYLON-12, BIS-DIGLYCERYL POLYACYLADIPATE-2, COCO-CAPRYLATE, UNDECYLENOYL GLYCINE, SODIUM DEHYDROACETATE, CAPRYLOYL GLYCINE, TOCOPHEROL, CI 77491 (IRON OXIDES), CI 77492 (IRON OXIDES), CI 77499 (IRON OXIDES)

SMALL PRODUCTS INGREDIENT LIST NOTICE

MALU WILZ Beauté GmbH
Gaußstrasse 13, 85757 Karlsfeld
Germany

MALU WILZ

Cfr CEE 1223/2009 art.19.2 & 3

4444.xx Blusher



INGREDIENTS: TALC, MICA, OCTYLDODECYL STEAROYL STEARATE, CAPRYLYL METHICONE, ALUMINUM STARCH OCTENYLSUCCINATE, CETEARYL ISONONANOATE, UNDECYLENOYL GLYCINE, SODIUM DEHYDROACETATE, CAPRYLOYL GLYCINE, DIMETHICONE/VINYL DIMETHICONE CROSSPOLYMER, LAUROYL LYSINE, SILICA, BIS-DIGLYCERYL POLYACYLADIPATE-2, CETYL PEG/PPG-10/1 DIMETHICONE, TOCOPHEROL, [+/- (MAY CONTAIN) CI 15850 (RED 7 LAKE), CI 75470 (CARMINE), CI 77007 (ULTRAMARINES), CI 77491 (IRON OXIDES), CI 77492 (IRON OXIDES), CI 77499 (IRON OXIDES), CI 77742 (MANGANESE VIOLET), CI 77891 (TITANIUM DIOXIDE)]

MALU WILZ Beauté GmbH
Gaußstrasse 13, 85757 Karlsfeld
Germany

MALU WILZ

SMALL PRODUCTS INGREDIENT LIST NOTICE

Cfr CEE 1223/2009 art.19.2 & 3

47588 Natural Glow Lip Oil



INGREDIENTS: HYDROGENATED POLYDECENE, POLYBUTENE, TRIDECYL TRIMELLITATE, ISOSTEARYL ISOSTEARATE, ETHYLENE/PROPYLENE COPOLYMER, PRUNUS ARMENIACA (APRICOT) KERNEL OIL, PRUNUS PERSICA (PEACH) KERNEL OIL, VITIS VINIFERA (GRAPE) SEED OIL, POLYGLYCERYL-4 ISOSTEARATE, VANILLIN, AROMA (FLAVOR), TOCOPHEROL, ASCORBYL PALMITATE, HELIANTHUS ANNUUS (SUNFLOWER) SEED OIL, LIMONENE, CI 45410 (RED 27)

MALU WILZ Beauté GmbH
Gaußstrasse 13, 85757 Karlsfeld
Germany

MALU WILZ

SMALL PRODUCTS INGREDIENT LIST NOTICE

Cfr CEE 1223/2009 art.19.2 & 3

4389 Eye Shadow Base



INGREDIENTS: ISODODECANE, HYDROGENATED POLYISOBUTENE, SILICA DIMETHYL SILYLATE, TALC, PRUNUS ARMENIACA (APRICOT) KERNEL OIL, DISTEARDIMONIUM HECTORITE, KAOLIN, ETHYLENE/PROPYLENE/STYRENE COPOLYMER, BUTYLENE/ETHYLENE/STYRENE COPOLYMER, PROPYLENE CARBONATE, TOCOPHERYL ACETATE, GLYCERYL CAPRYLATE, ALUMINUM HYDROXIDE, BHT, TOCOPHEROL, CI 77491 (IRON OXIDES), CI 77492 (IRON OXIDES), CI 77499 (IRON OXIDES), CI 77891 (TITANIUM DIOXIDE)

MALU WILZ Beauté GmbH
Gaußstrasse 13, 85757 Karlsfeld
Germany

MALU WILZ

SMALL PRODUCTS INGREDIENT LIST NOTICE

Cfr CEE 1223/2009 art.19.2 & 3

4582.xx Camouflage Cream



INGREDIENTS: PARAFFINUM LIQUIDUM (MINERAL OIL), PARAFFIN, HYDROGENATED POLYISOBUTENE, OCTYLDODECANOL, CANDELILLA CERA (EUPHORBIA CERIFERA (CANDELILLA) WAX), CETYL PALMITATE, MAGNESIUM MYRISTATE, TOCOPHEROL, CERA ALBA (BEESWAX), PETROLATUM, COPERNICIA CERIFERA CERA (COPERNICIA CERIFERA (CARNAUBA) WAX), PARFUM (FRAGRANCE), OLETH-10, PROPYLENE GLYCOL, BHT, ALPHA-ISOMETHYL IONONE, LINALOOL, ASCORBYL PALMITATE, GLYCERYL STEARATE, CINNAMYL ALCOHOL, CITRONELLOL, CITRIC ACID, HEXYL CINNAMAL, BENZYL SALICYLATE, COUMARIN, GERANIOL, BENZYL BENZOATE, [+/- (MAY CONTAIN) CI 19140 (YELLOW 5 LAKE), CI 75470 (CARMINE), CI 77007 (ULTRAMARINES), CI 77289 (CHROMIUM HYDROXIDE GREEN), CI 77491 (IRON OXIDES), CI 77492 (IRON OXIDES), CI 77499 (IRON OXIDES), CI 77891 (TITANIUM DIOXIDE)]

MALU WILZ Beauté GmbH
Gaußstrasse 13, 85757 Karlsfeld
Germany

MALU WILZ

SMALL PRODUCTS INGREDIENT LIST NOTICE

Cfr CEE 1223/2009 art.19.2 & 3

4330.x 2-in-1 Volume & Length Mascara



INGREDIENTS: AQUA (WATER), GLYCERYL STEARATE, COPERNICIA CERIFERA CERA (COPERNICIA CERIFERA (CARNAUBA) WAX), RICINUS COMMUNIS (CASTOR) SEED OIL, ACRYLATES COPOLYMER, VP/HEXADECENE COPOLYMER, CETEARYL ALCOHOL, POLYVINYL ALCOHOL, GLYCERIN, CERA MICROCRISTALLINA (MICROCRYSTALLINE WAX), C12-16 ALCOHOLS, BENZYL ALCOHOL, CETETH-10 PHOSPHATE, DICETYL PHOSPHATE, PALMITIC ACID, SODIUM DEHYDROACETATE, LECITHIN, PHENOXYETHANOL, POTASSIUM SORBATE, SODIUM HYDROXIDE, SODIUM CITRATE, DEHYDROACETIC ACID, TOCOPHEROL, ASCORBYL PALMITATE, BHT, CITRIC ACID, [+/- (MAY CONTAIN) CI 77499 (IRON OXIDES)]

MALU WILZ Beauté GmbH
Gaußstrasse 13, 85757 Karlsfeld
Germany

MALU WILZ

SMALL PRODUCTS INGREDIENT LIST NOTICE

Cfr CEE 1223/2009 art.19.2 & 3

473.xx True Matt Lip Fluid



INGREDIENTS: ISODODECANE, SYNTHETIC FLUORPHLOGOPITE, CAPRYLIC/CAPRIC TRIGLYCERIDE, DICALCIUM PHOSPHATE, DISTEARDIMONIUM HECTORITE, HYDROGENATED STYRENE/ISOPRENE COPOLYMER, POLYETHYLENE, HELIANTHUS ANNUUS SEED CERA (HELIANTHUS ANNUUS (SUNFLOWER) SEED WAX), PROPYLENE CARBONATE, PHENOXYETHANOL, AROMA (FLAVOR), 1,2-HEXANEDIOL, CAPRYLYL GLYCOL, TOCOPHERYL ACETATE, PENTAERYTHRITYL TETRA-DI-T-BUTYL HYDROXYHYDROCINNAMATE, LIMONENE, [+/- (MAY CONTAIN) CI 15850 (RED 7 LAKE), CI 15850 (RED 6), CI 15985 (YELLOW 6 LAKE), CI 42090 (BLUE 1 LAKE), CI 45410 (RED 28 LAKE), CI 77491 (IRON OXIDES), CI 77492 (IRON OXIDES), CI 77499 (IRON OXIDES), CI 77891 (TITANIUM DIOXIDE)]

MALU WILZ Beauté GmbH
Gaußstrasse 13, 85757 Karlsfeld
Germany

MALU WILZ

SMALL PRODUCTS INGREDIENT LIST NOTICE

Cfr CEE 1223/2009 art.19.2 & 3

4757.x Longwear Eyeshadow Pen



INGREDIENTS: ISODODECANE, MICA, SYNTHETIC WAX, CALCIUM ALUMINUM BOROSILICATE, CALCIUM SODIUM BOROSILICATE, SILICA, ETHYLENE/PROPYLENE COPOLYMER, POLYMETHYLSILSESQUIOXANE, POLYBUTENE, HYDROGENATED POLYDICYCLOPENTADIENE, SYNTHETIC FLUORPHLOGOPITE, SUCROSE TETRASTEARATE TRIACETATE, COCO-CAPRYLATE/CAPRATE, ORYZA SATIVA CERA (ORYZA SATIVA (RICE) BRAN WAX), SYNTHETIC BEESWAX, HYDROGENATED CASTOR OIL, KAOLIN, PENTAERYTHRITYL TETRA-DI-T-BUTYL HYDROXYHYDROCINNAMATE, TIN OXIDE, ASCORBYL PALMITATE, TOCOPHEROL, [+/- (MAY CONTAIN) CI 19140 (YELLOW 5 LAKE), CI 42090 (BLUE 1 LAKE), CI 75470 (CARMINE), CI 77000 (ALUMINUM POWDER), CI 77007 (ULTRAMARINES), CI 77163 (BISMUTH OXYCHLORIDE), CI 77288 (CHROMIUM OXIDE GREENS), CI 77400 (COPPER POWDER), CI 77491 (IRON OXIDES), CI 77492 (IRON OXIDES), CI 77499 (IRON OXIDES), CI 77510 (FERRIC FERROCYANIDE), CI 77510 (FERRIC AMMONIUM FERROCYANIDE), CI 77742 (MANGANESE VIOLET), CI 77891 (TITANIUM DIOXIDE)]

MALU WILZ

SMALL PRODUCTS INGREDIENT LIST NOTICE

Cfr CEE 1223/2009 art.19.2 & 3

47460.x Shimmer Star Cream



INGREDIENTS: TRIMETHYLOLPROPANE TRIISOSTEARATE, ISOSTEARYL ISOSTEARATE, SYNTHETIC FLUORPHLOGOPITE, MICA, CALCIUM SODIUM BOROSILICATE, DIISOSTEARYL MALATE, HYDROXYSTEARIC ACID, DEHYDROACETIC ACID, PHENOXYETHANOL, BENZOIC ACID, SORBIC ACID, SILICA, TIN OXIDE, [+/- (MAY CONTAIN) CI 15850 (RED 7 LAKE), CI 75470 (CARMINE), CI 77491 (IRON OXIDES), CI 77499 (IRON OXIDES), CI 77891 (TITANIUM DIOXIDE)]

MALU WILZ Beauté GmbH
Gaußstrasse 13, 85757 Karlsfeld
Germany

MALU WILZ

SMALL PRODUCTS INGREDIENT LIST NOTICE

Cfr CEE 1223/2009 art.19.2 & 3

47596.x Hydrating Lip Elixir



INGREDIENTS: RICINUS COMMUNIS (CASTOR) SEED OIL, TRIPELARGONIN, CAPRYLIC/CAPRIC TRIGLYCERIDE, POLYAMIDE-3, PARFUM (FRAGRANCE), PRUNUS AMYGDALUS DULCIS (SWEET ALMOND) OIL, TOCOPHERYL ACETATE, CALENDULA OFFICINALIS FLOWER, OLUS OIL (VEGETABLE OIL), TOCOPHEROL, LECITHIN, ASCORBYL PALMITATE, GLYCERYL STEARATE, PENTAERYTHRITYL TETRA-DI-TBUTYL HYDROXYHYDROCINNAMATE, GLYCERYL OLEATE, HOYA LACUNOSA FLOWER EXTRACT, CITRIC ACID

MALU WILZ Beauté GmbH
Gaußstrasse 13, 85757 Karlsfeld
Germany

MALU WILZ

SMALL PRODUCTS INGREDIENT LIST NOTICE

Cfr CEE 1223/2009 art.19.2 & 3

449.xx Perfect Eye Powder Refill



INGREDIENTS: CYCLOPENTASILOXANE, MICA, CERA ALBA (BEESWAX), STEARYL HEPTANOATE, BEHENYL ALCOHOL, CALCIUM SULFATE, STEARYL CAPRYLATE, DIMETHICONE, SILICA, COPERNICIA CERIFERA CERA (COPERNICIA CERIFERA (CARNAUBA) WAX), NYLON-6, TOCOPHERYL ACETATE, METHYLPARABEN, PROPYLPARABEN, [+/- (MAY CONTAIN) CI 75470 (CARMINE), CI 77007 (ULTRAMARINES), CI 77163 (BISMUTH OXYCHLORIDE), CI 77491 (IRON OXIDES), CI 77492 (IRON OXIDES), CI 77499 (IRON OXIDES), CI 77510 (FERRIC FERROCYANIDE), CI 77742 (MANGANESE VIOLET), CI 77891 (TITANIUM DIOXIDE)]

MALU WILZ

SMALL PRODUCTS INGREDIENT LIST NOTICE

Cfr CEE 1223/2009 art.19.2 & 3

4242.xx Color & Shine Lip Stylo



INGREDIENTS: OCTYLDODECANOL, DIISOSTEARYL MALATE, SYNTHETIC FLUORPHLOGOPITE, PENTAERYTHRITYL TETRAISOSTEARATE, POLYBUTENE, POLYETHYLENE, CAPRYLIC/CAPRIC TRIGLYCERIDE, MICA, SYNTHETIC BEESWAX, PHENOXYETHANOL, SCLEROCARYA BIRREA SEED OIL, ETHYLHEXYL PALMITATE, CALCIUM ALUMINUM BOROSILICATE, PENTAERYTHRITYL TETRA-DI-T-BUTYL HYDROXYHYDROCINNAMATE, PARFUM (FRAGRANCE), SILICA, BENZYL BENZOATE, TRIHYDROXYSTEARIN, TIN OXIDE, SODIUM HYALURONATE, [+/- (MAY CONTAIN) CI 15850 (RED 7 LAKE), CI 15850 (RED 7), CI 15985 (YELLOW 6 LAKE), CI 19140 (YELLOW 5 LAKE), CI 42090 (BLUE 1 LAKE), CI 45380 (RED 21), CI 45410 (RED 28 LAKE), CI 77491 (IRON OXIDES), CI 77492 (IRON OXIDES), CI 77499 (IRON OXIDES), CI 77742 (MANGANESE VIOLET), CI 77891 (TITANIUM DIOXIDE)]

MALU WILZ

SMALL PRODUCTS INGREDIENT LIST NOTICE

Cfr CEE 1223/2009 art.19.2 & 3

4761.x Longwear Soft Touch Lipstick



INGREDIENTS: ISODODECANE, SYNTHETIC FLUORPHLOGOPITE, MICA, SYNTHETIC WAX, CAPRYLYL METHICONE, DIISOSTEARYL MALATE, POLYBUTENE, CALCIUM ALUMINUM BOROSILICATE, SILICA, PERSEA GRATISSIMA (AVOCADO) OIL, PENTAERYTHRITYL TETRA-DI-T-BUTYL HYDROXYHYDROCINNAMATE, PHYTOSTEROLS, OLEA EUROPAEA (OLIVE) FRUIT OIL, TIN OXIDE, SORBITAN OLEATE, ASCORBYL PALMITATE, TOCOPHERYL ACETATE, [+/- (MAY CONTAIN) CI 15850 (RED 7 LAKE), CI 15850 (RED 6), CI 15850 (RED 7), CI 15985 (YELLOW 6 LAKE), CI 19140 (YELLOW 5 LAKE), CI 42090 (BLUE 1 LAKE), CI 45410 (RED 28 LAKE), CI 75470 (CARMINE), CI 77491 (IRON OXIDES), CI 77492 (IRON OXIDES), CI 77499 (IRON OXIDES), CI 77891 (TITANIUM DIOXIDE)]

MALU WILZ

SMALL PRODUCTS INGREDIENT LIST NOTICE

Cfr CEE 1223/2009 art.19.2 & 3

47593.x Lip Diamond



INGREDIENTS: POLYBUTENE, CAPRYLIC/CAPRIC TRIGLYCERIDE, CALCIUM SODIUM BOROSILICATE, CALCIUM ALUMINUM BOROSILICATE, MICA, POLYETHYLENE, SYNTHETIC FLUORPHLOGOPITE, CERA MICROCRISTALLINA (MICROCRYSTALLINE WAX), SILICA, DIPENTAERYTHRITYL HEXAHYDROXYSTEARATE, OCTYLDODECANOL, DICALCIUM PHOSPHATE, DISTEARDIMONIUM HECTORITE, TIN OXIDE, ALCOHOL, ETHYL VANILLIN, BERTHOLLETIA EXCELSA SEED OIL, PENTAERYTHRITYL TETRA-DI-T-BUTYL HYDROXYHYDROCINNAMATE, AQUA (WATER), ALUMINUM CALCIUM SODIUM SILICATE, ALUMINA, CALCIUM TITANIUM BOROSILICATE, TOCOPHEROL, [+/- (MAY CONTAIN) CI 15850 (RED 7 LAKE), CI 19140 (YELLOW 5 LAKE), CI 42090 (BLUE 1 LAKE), CI 45410 (RED 28 LAKE), CI 77491 (IRON OXIDES), CI 77492 (IRON OXIDES), CI 77499 (IRON OXIDES), CI 77891 (TITANIUM DIOXIDE)]

MALU WILZ

SMALL PRODUCTS INGREDIENT LIST NOTICE

Cfr CEE 1223/2009 art.19.2 & 3

474.xx Metallic Matt Lip Fluid



INGREDIENTS: AQUA (WATER), MICA, SILICA, PENTYLENE GLYCOL, ACRYLATES COPOLYMER, GLYCERIN, PHENOXYETHANOL, STYRENE/ACRYLATES COPOLYMER, PROPYLENE GLYCOL, SODIUM DEHYDROACETATE, SODIUM HYDROXIDE, TIN OXIDE, ACACIA SEYAL GUM EXTRACT, GLYCERYL ACRYLATE/ACRYLIC ACID COPOLYMER, PVM/MA COPOLYMER, POTASSIUM SORBATE, ETHYLHEXYLGLYCERIN, [+/- (MAY CONTAIN) CI 75470 (CARMINE), CI 77491 (IRON OXIDES), CI 77499 (IRON OXIDES), CI 77510 (FERRIC FERROCYANIDE), CI 77510 (FERRIC AMMONIUM FERROCYANIDE), CI 77891 (TITANIUM DIOXIDE)]

MALU WILZ Beauté GmbH
Gaußstrasse 13, 85757 Karlsfeld
Germany

MALU WILZ

SMALL PRODUCTS INGREDIENT LIST NOTICE

Cfr CEE 1223/2009 art.19.2 & 3

4400.xx Eye Shadow



N° 20, 22, 23, 27, 42, 46

INGREDIENTS: TALC, MICA, OCTYLDODECYL STEAROYL STEARATE, CAPRYLYL METHICONE, ALUMINUM STARCH OCTENYLSUCCINATE, CETEARYL ISONONANOATE, UNDECYLENOYL GLYCINE, SODIUM DEHYDROACETATE, SYNTHETIC FLUORPHLOGOPITE, SILICA, MALTODEXTRIN, CAPRYLOYL GLYCINE, DIMETHICONE/VINYL DIMETHICONE CROSSPOLYMER, BIS-DIGLYCERYL POLYACYLADIPATE-2, TIN OXIDE, CETYL PEG/PPG-10/1 DIMETHICONE, TOCOPHEROL, [+/- (MAY CONTAIN) CI 75470 (CARMINE), CI 77007 (ULTRAMARINES), CI 77491 (IRON OXIDES), CI 77492 (IRON OXIDES), CI 77499 (IRON OXIDES), CI 77742 (MANGANESE VIOLET), CI 77891 (TITANIUM DIOXIDE)]

N°30

INGREDIENTS: TALC, ALUMINUM STARCH OCTENYLSUCCINATE, OCTYLDODECYL STEAROYL STEARATE, LAUROYL LYSINE, NYLON-12, COCO-CAPRYLATE, UNDECYLENOYL GLYCINE, SODIUM DEHYDROACETATE, CAPRYLOYL GLYCINE, BIS-DIGLYCERYL POLYACYLADIPATE-2, TOCOPHEROL, [+/- (MAY CONTAIN) CI 77491 (IRON OXIDES), CI 77492 (IRON OXIDES), CI 77499 (IRON OXIDES), CI 77742 (MANGANESE VIOLET)]

N. 40, 48, 50, 51, 52, 53, 54, 57, 59, 62, 65, 72, 75, 82, 86, 87, 91, 93, 94, 95, 96, 98, 159, 163, 169, 179, 196, 197

INGREDIENTS: TALC, MICA, OCTYLDODECYL STEAROYL STEARATE, ALUMINUM STARCH OCTENYLSUCCINATE, SYNTHETIC FLUORPHLOGOPITE, LAUROYL LYSINE, NYLON-12, BIS-DIGLYCERYL POLYACYLADIPATE-2, COCO-CAPRYLATE, UNDECYLENOYL GLYCINE, SODIUM DEHYDROACETATE, CAPRYLOYL GLYCINE, TIN OXIDE, MALTODEXTRIN, TOCOPHEROL, CETEARYL ISONONANOATE, [+/- (MAY CONTAIN) CI 75470 (CARMINE), CI 77007 (ULTRAMARINES), CI 77288 (CHROMIUM OXIDE GREENS), CI 77491 (IRON OXIDES), CI 77492 (IRON OXIDES), CI 77499 (IRON OXIDES), CI 77510 (FERRIC FERROCYANIDE), CI 77742 (MANGANESE VIOLET), CI 77891 (TITANIUM DIOXIDE)]

MALU WILZ

SMALL PRODUCTS INGREDIENT LIST NOTICE

Cfr CEE 1223/2009 art.19.2 & 3

4210.xx Soft Lip Styler



INGREDIENTS: SYNTHETIC FLUORPHLOGOPITE, MICA, BIS-DIGLYCERYL POLYACYLADIPATE-2, HYDROGENATED POLY(C6-14 OLEFIN), HYDROGENATED POLYDECENE, HYDROGENATED POLYISOBUTENE, CANDELILLA CERA (EUPHORBIA CERIFERA (CANDELILLA) WAX), COPERNICIA CERIFERA CERA (COPERNICIA CERIFERA (CARNAUBA) WAX), SYNTHETIC WAX, SILICA Silylate, HYDROGENATED OLIVE OIL STEARYL ESTERS, SILICA, COCO-CAPRYLATE/CAPRATE, HYDROGENATED JOJOBA OIL, SYNTHETIC BEESWAX, OCTYLDODECANOL, PANTHENYL TRIACETATE, PENTAERYTHRITYL TETRAISOSTEARATE, PENTAERYTHRITYL TETRA-DI-T-BUTYL HYDROXYHYDROCINNAMATE, TOCOPHERYL NICOTINATE, SALICYLOYL PHYTOSPHINGOSINE, CERAMIDE NP, SODIUM HYALURONATE, AQUA (WATER), [+/- (MAY CONTAIN) CI 15850 (RED 7 LAKE), CI 15850 (RED 6), CI 15850 (RED 7), CI 15985 (YELLOW 6 LAKE), CI 19140 (YELLOW 5 LAKE), CI 42090 (BLUE 1 LAKE), CI 45410 (RED 28 LAKE), CI 73360 (RED 30), CI 75470 (CARMINE), CI 77491 (IRON OXIDES), CI 77492 (IRON OXIDES), CI 77499 (IRON OXIDES), CI 77742 (MANGANESE VIOLET), CI 77891 (TITANIUM DIOXIDE)]

MALU WILZ

SMALL PRODUCTS INGREDIENT LIST NOTICE

Cfr CEE 1223/2009 art.19.2 & 3

421.xx Lip Liner



INGREDIENTS: ISODODECANE, SILICA, MICA, SYNTHETIC WAX, HYDROGENATED POLYDICYCLOPENTADIENE, SYNTHETIC FLUORPHLOGOPITE, POLYBUTENE, NYLON-12, PERFLUORONONYL DIMETHICONE, POLYGLYCERYL-4 DIISOSTEARATE/POLYHYDROXYSTEARATE/SEBACATE, COPERNICIA CERIFERA (CARNAUBA) WAX, PENTAERYTHRITYL TETRA-DI-T-BUTYL HYDROXYHYDROCINNAMATE, [+/- (MAY CONTAIN) CI 15850 (RED 7 LAKE), CI 15850 (RED 6), CI 15850 (RED 7), CI 15985 (YELLOW 6 LAKE), CI 19140 (YELLOW 5 LAKE), CI 42090 (BLUE 1 LAKE), CI 45410 (RED 28 LAKE), CI 73360 (RED 30), CI 73360 (RED 30 LAKE), CI 77491 (IRON OXIDES), CI 77492 (IRON OXIDES), CI 77499 (IRON OXIDES), CI 77891 (TITANIUM DIOXIDE)]

MALU WILZ

SMALL PRODUCTS INGREDIENT LIST NOTICE

Cfr CEE 1223/2009 art.19.2 & 3

425.xx Super Stay Lip Fluid



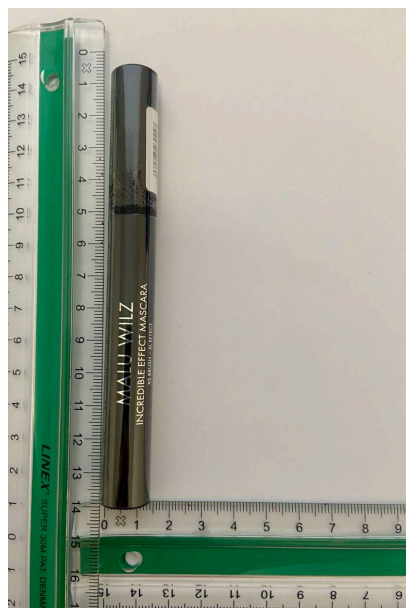
INGREDIENTS: ISODODECANE, TRIMETHYLSILOXYSILICATE, HYDROGENATED POLYISOBUTENE, KAOLIN, POLYETHYLENE, DISTEARDIMONIUM HECTORITE, CETYL PEG/PPG-10/1 DIMETHICONE, ETHYLENE/PROPYLENE/STYRENE COPOLYMER, PROPYLENE CARBONATE, BUTYLENE/ETHYLENE/STYRENE COPOLYMER, TRIETHOXYCAPRYLYLSILANE, PARFUM (FRAGRANCE), ALUMINUM HYDROXIDE, HELIANTHUS ANNUUS (SUNFLOWER) SEED OIL, BHT, TOCOPHEROL, COMBRETUM FARINOSUM FLOWER NECTAR, ALCOHOL, [+/- (MAY CONTAIN) CI 15850 (RED 6), CI 15850 (RED 7), CI 15985 (YELLOW 6 LAKE), CI 42090 (BLUE 1 LAKE), CI 45410 (RED 28 LAKE), CI 77491 (IRON OXIDES), CI 77492 (IRON OXIDES), CI 77499 (IRON OXIDES), CI 77891 (TITANIUM DIOXIDE)]

MALU WILZ

SMALL PRODUCTS INGREDIENT LIST NOTICE

Cfr CEE 1223/2009 art.19.2 & 3

47603.x Incredible Effect Mascara



INGREDIENTS: AQUA (WATER), EUPHORBIA CERIFERA CERA (EUPHORBIA CERIFERA (CANDELILLA) WAX), ACACIA DECURRENS/JOJOBA/SUNFLOWER SEED CERA/POLYGLYCERYL-3 ESTERS, COPERNICIA CERIFERA (CARNAUBA) WAX, STEARIC ACID, STEARETH-21, ALCOHOL, POTASSIUM CETYL PHOSPHATE, ACACIA SENEGAL GUM, GLYCERIN, SILICA, CETYL ALCOHOL, STEARETH-2, STYRENE/ACRYLATES/AMMONIUM METHACRYLATE COPOLYMER, PPG-25-LAURETH-25, SIMETHICONE, TALC, PHENOXYETHANOL, BENZYL ALCOHOL, HYDROXYETHYLCELLULOSE, SODIUM DEHYDROACETATE, SODIUM HYDROXIDE, SERICIN, SACCHAROMYCES/COPPER FERMENT, SACCHAROMYCES/IRON FERMENT, SACCHAROMYCES/MAGNESIUM FERMENT, SACCHAROMYCES/SILICON FERMENT, SACCHAROMYCES/ZINC FERMENT, CALENDULA OFFICINALIS FLOWER EXTRACT, LEUCONOSTOC/RADISH ROOT FERMENT FILTRATE, CITRIC ACID, SODIUM BENZOATE, POTASSIUM SORBATE, CI 77499 (IRON OXIDES)

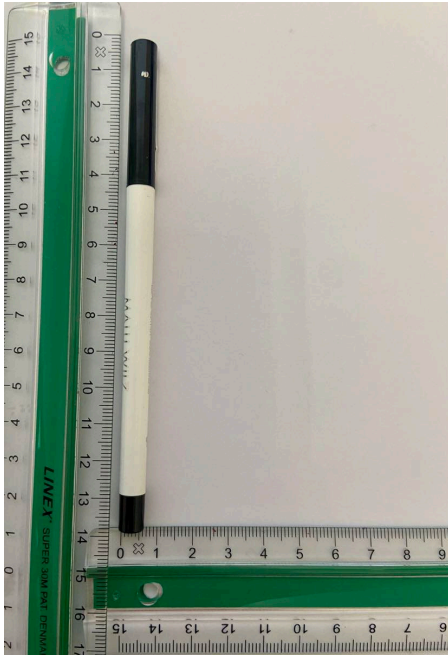
MALU WILZ Beauté GmbH
Gaußstrasse 13, 85757 Karlsfeld
Germany

MALU WILZ

SMALL PRODUCTS INGREDIENT LIST NOTICE

Cfr CEE 1223/2009 art.19.2 & 3

4211.01 Invisible Lip Styler



INGREDIENTS: ISODODECANE, SYNTHETIC FLUORPHLOGOPITE, SYNTHETIC WAX, POLYBUTENE, TRIMETHYLSILOXYSILICATE, ISOAMYL LAURATE, SILICA, SUCROSE TETRASTEARATE TRIACETATE, HYDROGENATED JOJOBA OIL, CETEARYL BEHENATE, MICA, PENTAERYTHRITYL TETRA-DI-T-BUTYL HYDROXYHYDROCINNAMATE

MALU WILZ

SMALL PRODUCTS INGREDIENT LIST NOTICE

Cfr CEE 1223/2009 art.19.2 & 3

4775.x Eyebrow Filling Gel



INGREDIENTS: AQUA (WATER), PROPANEDIOL, PVP, GLYCERIN, POLYSORBATE 20, POLYMETHYLSILSESQUIOXANE, PHENOXYETHANOL, ACRYLATES/C10-30 ALKYL ACRYLATE CROSSPOLYMER, NYLON-66, PANTHENOL, SODIUM HYDROXIDE, ETHYLHEXYLGLYCERIN, HYDRATED SILICA, [+/- (MAY CONTAIN) CI 77491 (IRON OXIDES), CI 77492 (IRON OXIDES), CI 77499 (IRON OXIDES), CI 77891 (TITANIUM DIOXIDE)]

MALU WILZ Beauté GmbH
Gaußstrasse 13, 85757 Karlsfeld
Germany

MALU WILZ

SMALL PRODUCTS INGREDIENT LIST NOTICE

Cfr CEE 1223/2009 art.19.2 & 3

4738.x Eyebrow Gel



INGREDIENTS: AQUA (WATER), ALCOHOL DENAT., ACRYLATES COPOLYMER, VP/VA COPOLYMER, AMINOMETHYL PROPANOL, PHENOXYETHANOL, PANTHENOL, PPG-26-BUTETH-26, CAPRYLYL GLYCOL, TALC, PEG-40 HYDROGENATED CASTOR OIL, ETHYLHEXYLGLYCERIN, DISODIUM EDTA, CITRIC ACID, [+/- (MAY CONTAIN) CI 77491 (IRON OXIDES), CI 77492 (IRON OXIDES), CI 77499 (IRON OXIDES), CI 77891 (TITANIUM DIOXIDE)]

MALU WILZ Beauté GmbH
Gaußstrasse 13, 85757 Karlsfeld
Germany

MALU WILZ

SMALL PRODUCTS INGREDIENT LIST NOTICE

Cfr CEE 1223/2009 art.19.2 & 3

4793.x Longwear Liquid Eyebrow Liner



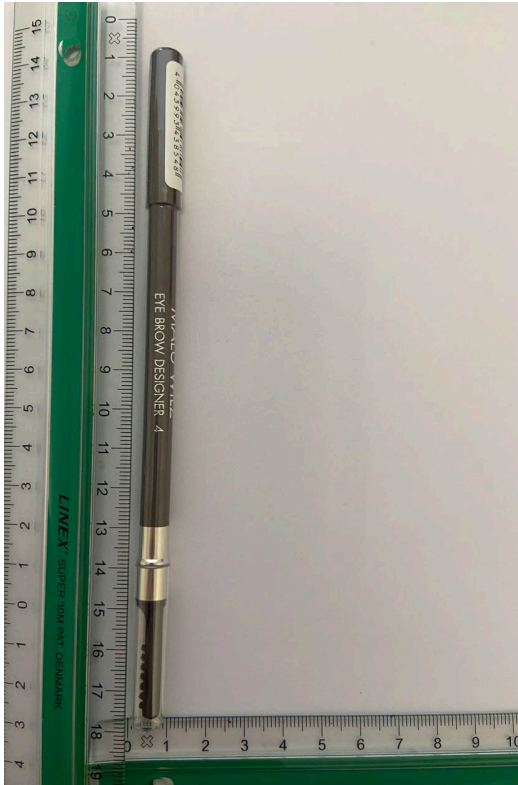
INGREDIENTS: AQUA (WATER), ALCOHOL DENAT., STYRENE/ACRYLATES/AMMONIUM METHACRYLATE COPOLYMER, BUTYLENE GLYCOL, POLOXAMER 407, METHYLPROPANEDIOL, SILICA, COCO-GLUCOSIDE, PHENOXYETHANOL, POTASSIUM SORBATE, CITRIC ACID, SODIUM LAURETH-12 SULFATE, AMMONIUM HYDROXIDE, XANTHAN GUM, BHT, [+/- (MAY CONTAIN) CI 77266 (BLACK 2) (NANO), CI 77491 (IRON OXIDES), CI 77492 (IRON OXIDES), CI 77499 (IRON OXIDES), CI 77510 (FERRIC AMMONIUM FERROCYANIDE), CI 77891 (TITANIUM DIOXIDE)]

MALU WILZ

SMALL PRODUCTS INGREDIENT LIST NOTICE

Cfr CEE 1223/2009 art.19.2 & 3

4385.x Eye Brow Designer



INGREDIENTS: ETHYLHEXYL ISOSTEARATE, MICA, NEOPENTYL GLYCOL DIETHYLHEXANOATE, CANDELILLA CERA (EUPHORBIA CERIFERA (CANDELILLA) WAX), COPERNICIA CERIFERA CERA (COPERNICIA CERIFERA (CARNAUBA) WAX), NYLON-12, MAGNESIUM ALUMINUM SILICATE, CERESIN, PARAFFIN, KAOLIN, SILICA, SYNTHETIC FLUORPHLOGOPITE, TALC, TOCOPHEROL, ASCORBYL PALMITATE, [+/- (MAY CONTAIN) CI 77000 (ALUMINUM POWDER), CI 77007 (ULTRAMARINES), CI 77491 (IRON OXIDES), CI 77492 (IRON OXIDES), CI 77499 (IRON OXIDES), CI 77891 (TITANIUM DIOXIDE)]

MALU WILZ Beauté GmbH
Gaußstrasse 13, 85757 Karlsfeld
Germany

MALU WILZ

SMALL PRODUCTS INGREDIENT LIST NOTICE

Cfr CEE 1223/2009 art.19.2 & 3

4386.x Duo Eyebrow Styler



DUO EYEBROW STYLER INGREDIENTS: RICINUS COMMUNIS (CASTOR) SEED OIL, HYDROGENATED VEGETABLE OIL, COPERNICIA CERIFERA CERA (COPERNICIA CERIFERA (CARNAUBA) WAX), CANDELILLA CERA (EUPHORBIA CERIFERA (CANDELILLA) WAX), CAPRYLIC/CAPRIC TRIGLYCERIDE, CERA ALBA (BEESWAX), C10-18 TRIGLYCERIDES, ISOPROPYL MYRISTATE, PARAFFINUM LIQUIDUM (MINERAL OIL), MICA, TALC, TOCOPHERYL ACETATE, BHT, [+/- (MAY CONTAIN) CI 77491 (IRON OXIDES), CI 77492 (IRON OXIDES), CI 77499 (IRON OXIDES), CI 77891 (TITANIUM DIOXIDE)]

MALU WILZ

SMALL PRODUCTS INGREDIENT LIST NOTICE

Cfr CEE 1223/2009 art.19.2 & 3

4792.x Super Precision Eyebrow Liner



INGREDIENTS: DIISOSTEARYL MALATE, MICA, TRIETHYLHEXANOIN, C20-40 ACID, C20-40 ALCOHOLS, POLYETHYLENE, SYNTHETIC WAX, GLYCERYL BEHENATE/EICOSADIOATE, ETHYLENE/PROPYLENE COPOLYMER, BORON NITRIDE, ETHYLCELLULOSE, VP/EICOSENE COPOLYMER, TOCOPHEROL, ASCORBYL PALMITATE, [+/- (MAY CONTAIN) CI 77491 (IRON OXIDES), CI 77492 (IRON OXIDES), CI 77499 (IRON OXIDES), CI 77891 (TITANIUM DIOXIDE)]

MALU WILZ Beauté GmbH
Gaußstrasse 13, 85757 Karlsfeld
Germany

MALU WILZ

SMALL PRODUCTS INGREDIENT LIST NOTICE

Cfr CEE 1223/2009 art.19.2 & 3

4377.x Soft Eye Styler



INGREDIENTS: ISODODECANE, MICA, POLYETHYLENE, SYNTHETIC WAX, HYDROGENATED POLYDICYCLOPENTADIENE, BIS-DIGLYCERYL POLYACYLADIPATE-2, ETHYLENE/PROPYLENE COPOLYMER, POLYBUTENE, SILICA, OCTYLDODECANOL, PERFLUORONONYL DIMETHICONE, KAOLIN, PENTAERYTHRITYL TETRA-DI-T-BUTYL HYDROXYHYDROCINNAMATE, TIN OXIDE, [+/- (MAY CONTAIN) CI 42090 (BLUE 1), CI 75470 (CARMINE), CI 77007 (ULTRAMARINES), CI 77288 (CHROMIUM OXIDE GREENS), CI 77491 (IRON OXIDES), CI 77492 (IRON OXIDES), CI 77499 (IRON OXIDES), CI 77510 (FERRIC FERROCYANIDE), CI 77510 (FERRIC AMMONIUM FERROCYANIDE), CI 77742 (MANGANESE VIOLET), CI 77891 (TITANIUM DIOXIDE)]

MALU WILZ Beauté GmbH
Gaußstrasse 13, 85757 Karlsfeld
Germany